

Classroom Management

In this chapter, you will find information and guidance to ease the implementation of WeDo 2.0 in your classroom.

The secret for success resides in some key elements:

- Good material preparation
- Good classroom disposition
- Good WeDo 2.0 project preparation
- Good guidance of students





Preparing the Material

Before Using WeDo 2.0 with Your Students

1. Install the WeDo 2.0 software on your computers or tablets.
2. Open each LEGO® Education WeDo 2.0 core set and sort the elements.
3. Attach the labels to the relevant compartments in the sorting tray.
4. You may want to identify and label the box, Smarthub, motor, and sensors with a number. That way, you can sign out a numbered kit to each student or team. You may find it helpful to display the parts list in your classroom.
5. Insert two AA batteries into the Smarthub or use the supplementary Smarthub Rechargeable Battery.

▶ Suggestion

To improve your classroom experience, it is strongly recommended that you give a unique name to each Smarthub. This can be done from the Connection Center of the WeDo 2.0 software.

To Rename a Smarthub

From the WeDo 2.0 software, access the Connection Center:

1. Press the green button on the Smarthub.
2. Press the Smarthub name in the list to connect to it.
3. Long press on the connected Smarthub name you want to change.
4. At this point, you will be able to enter a new name for the Smarthub (e.g., A, B, etc.). By doing this, it will be easier for your students to connect to the right Smarthub.





Before Starting a Project

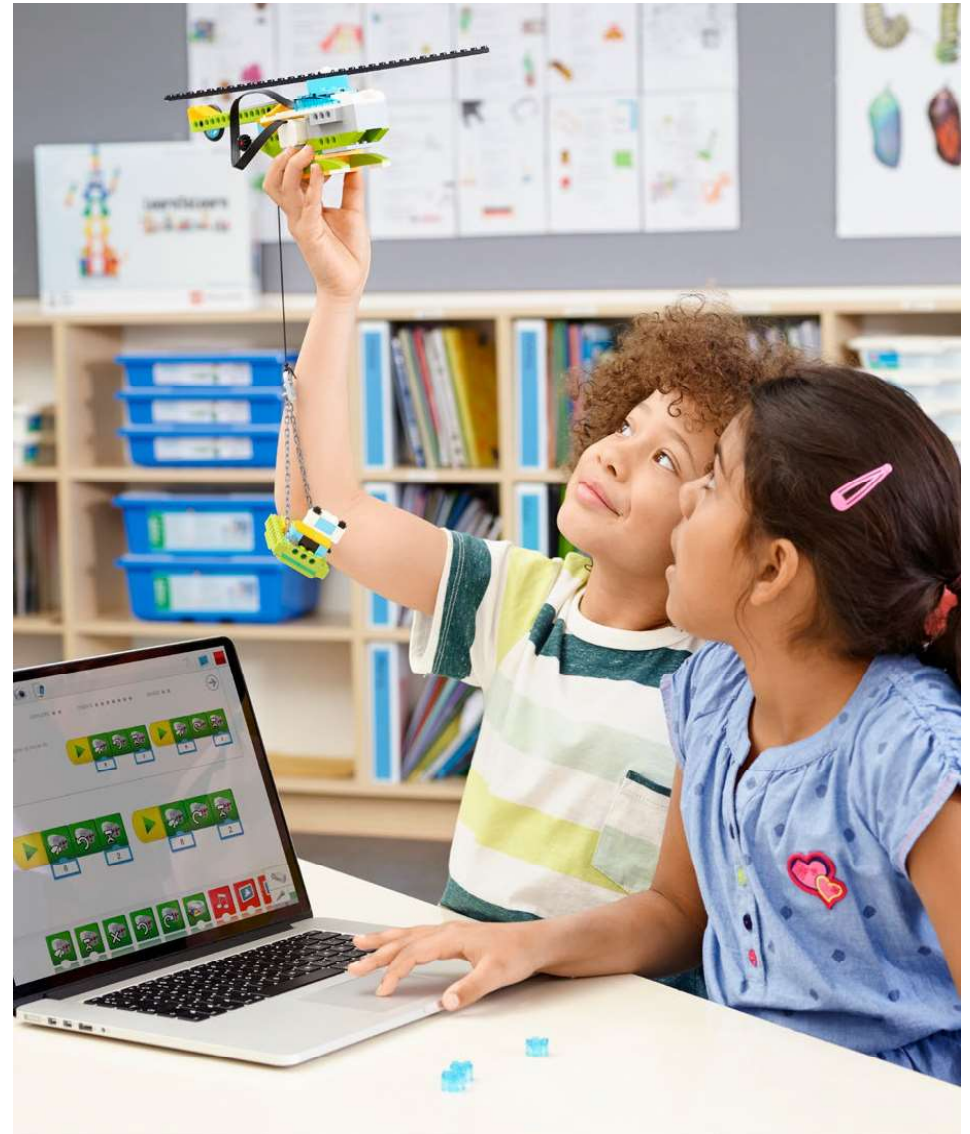
Teacher Preparation

1. Read the overview and project description, and select some projects you wish to do.
2. Spend some time reading about the project, understanding the flow, and exploring the teacher help that is provided.
3. Spend some time exploring the bricks in the set, and decide on a few key expectations to determine how you will use the WeDo 2.0 materials in class.
4. Set aside an hour and try the Getting Started Project as if you were a student.
5. Before going to class, review your plan for the project you have selected.

Classroom Preparation

1. Organize a cabinet, a wheeled cart, or other space in which to store the sets between lessons.
2. If it is not already available in your classroom, prepare a box of measuring tools, including rulers or measuring tapes and paper, for collecting data and making charts.
3. Ensure there is enough space in your classroom for the students to work on their projects.
4. When planning the projects, ensure that there is enough time for the students to store their models or put the parts back in the box at the end of the lesson.

Now you are good to go!





Student Guidance

It is important to establish good classroom management habits when working with the WeDo 2.0 sets and digital devices.

It may be helpful to establish clear expectations for team roles:

- WeDo 2.0 projects are optimal for a team of two students working together.
- Have students work to their strengths in their groups.
- Make adjustments for challenging teams who are ready to develop new skills and improve further.
- Assign or have students determine specific roles for each team member.

Suggestion

Assign a role to each student so the team can foster collaboration and cooperation skills. Here are some roles you could use:

- Builder, brick picker
- Builder, brick assembler
- Programmer, creating the program strings
- Documenter, taking photos and videos
- Presenter, explaining the project
- Team captain

It is also a good idea to rotate roles, to let every student experience all components of the project, and, therefore, get the chance to develop a range of skills.